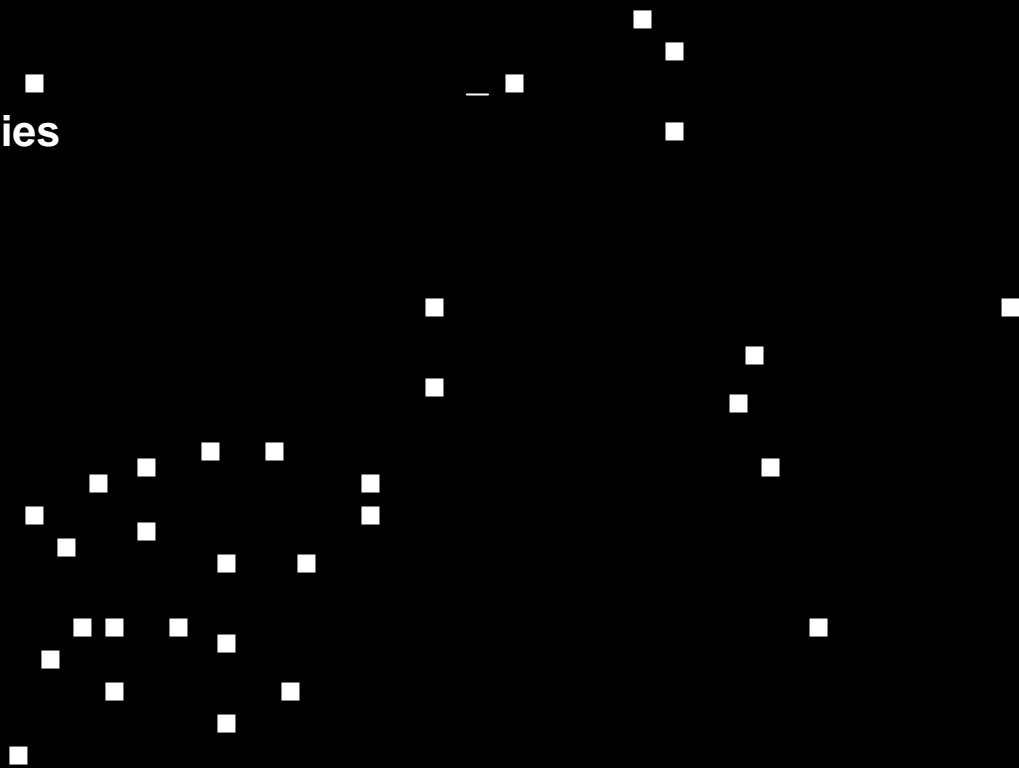


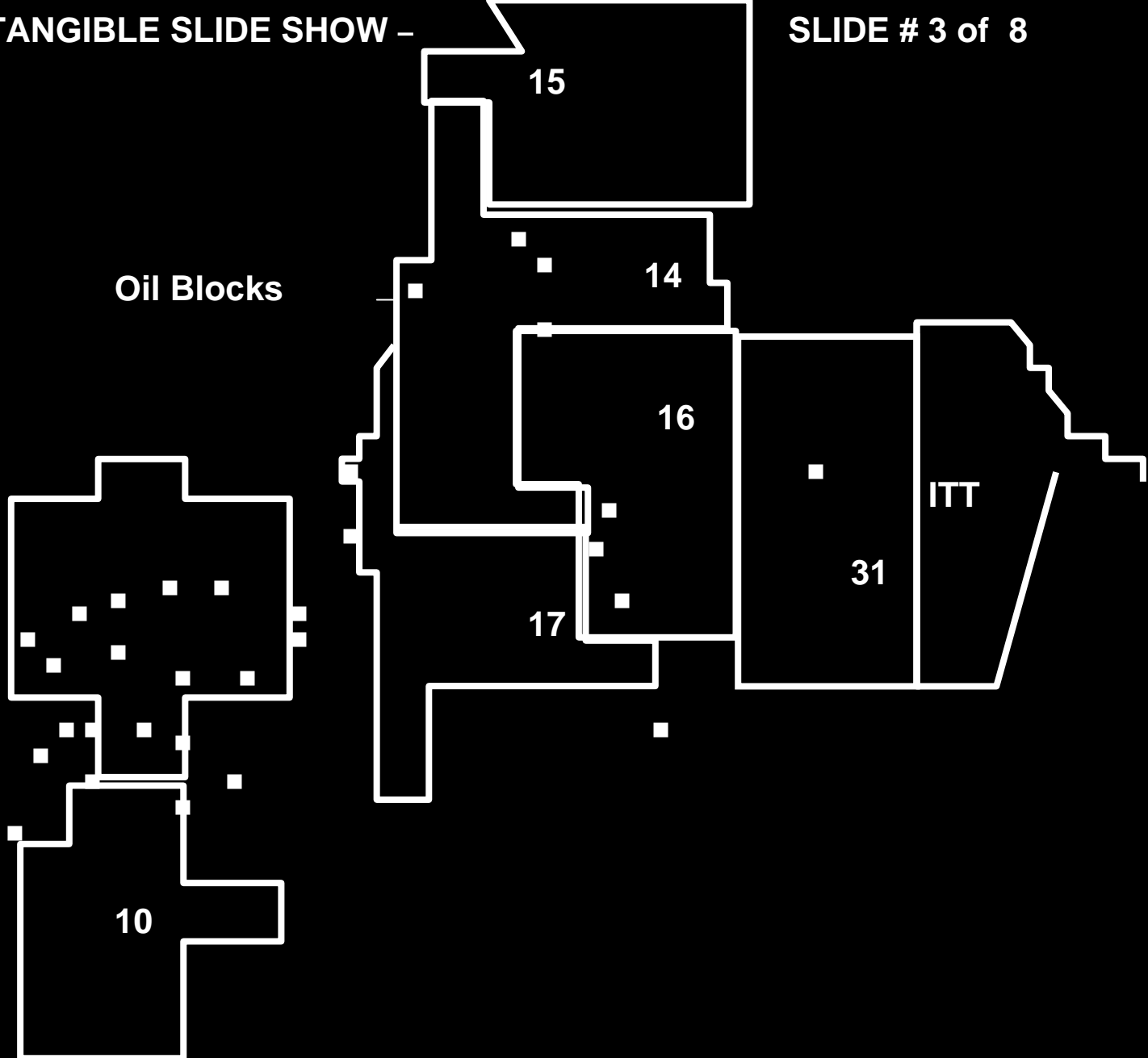
—

**Waorani
Reserve**

Huaorani ■
Communities



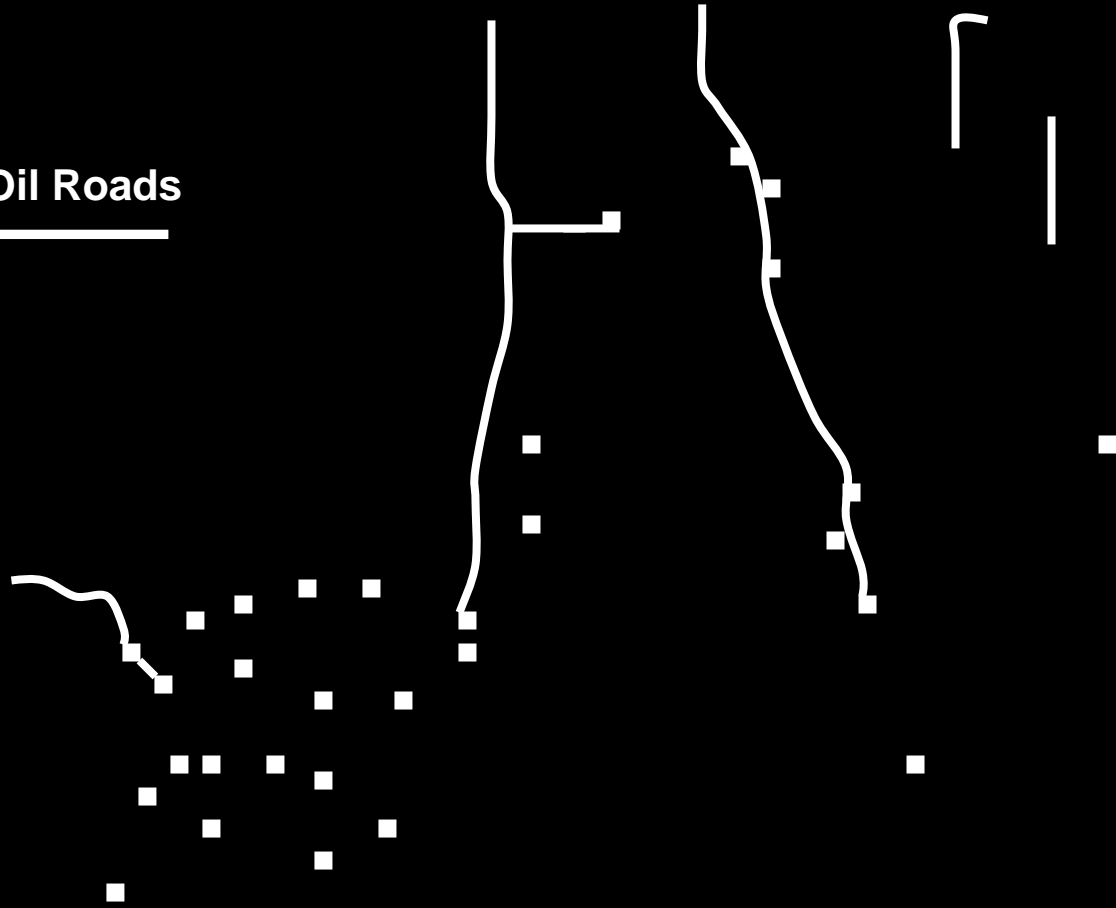
Slide 2- ■ Location of 32 Huaorani communities



Slide 3- Eight oil concessions overlap Huaorani Territory and Yasuní National Park

ZONE INTANGIBLE SLIDE SHOW – SLIDE # 4 of 8

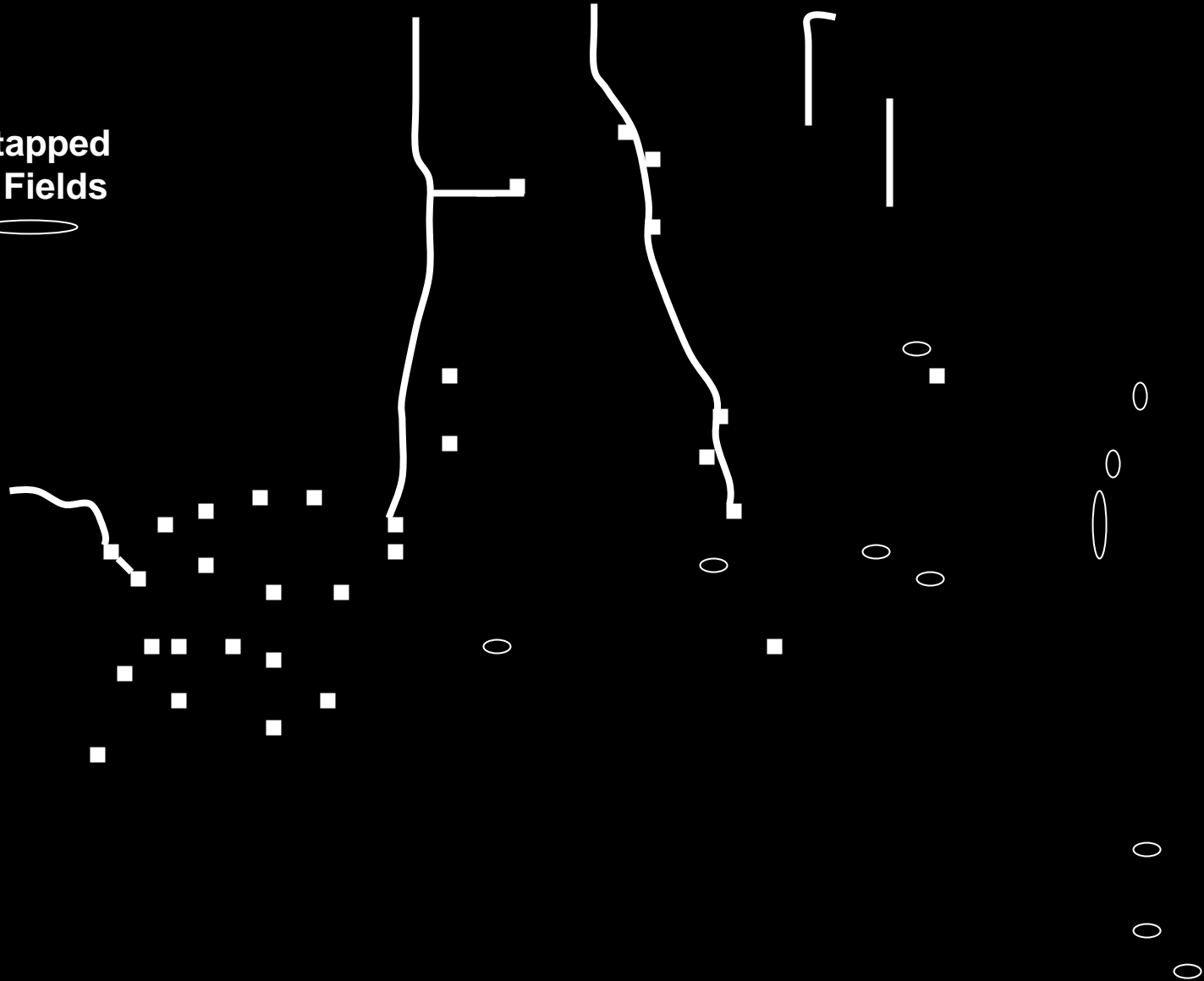
Oil Roads



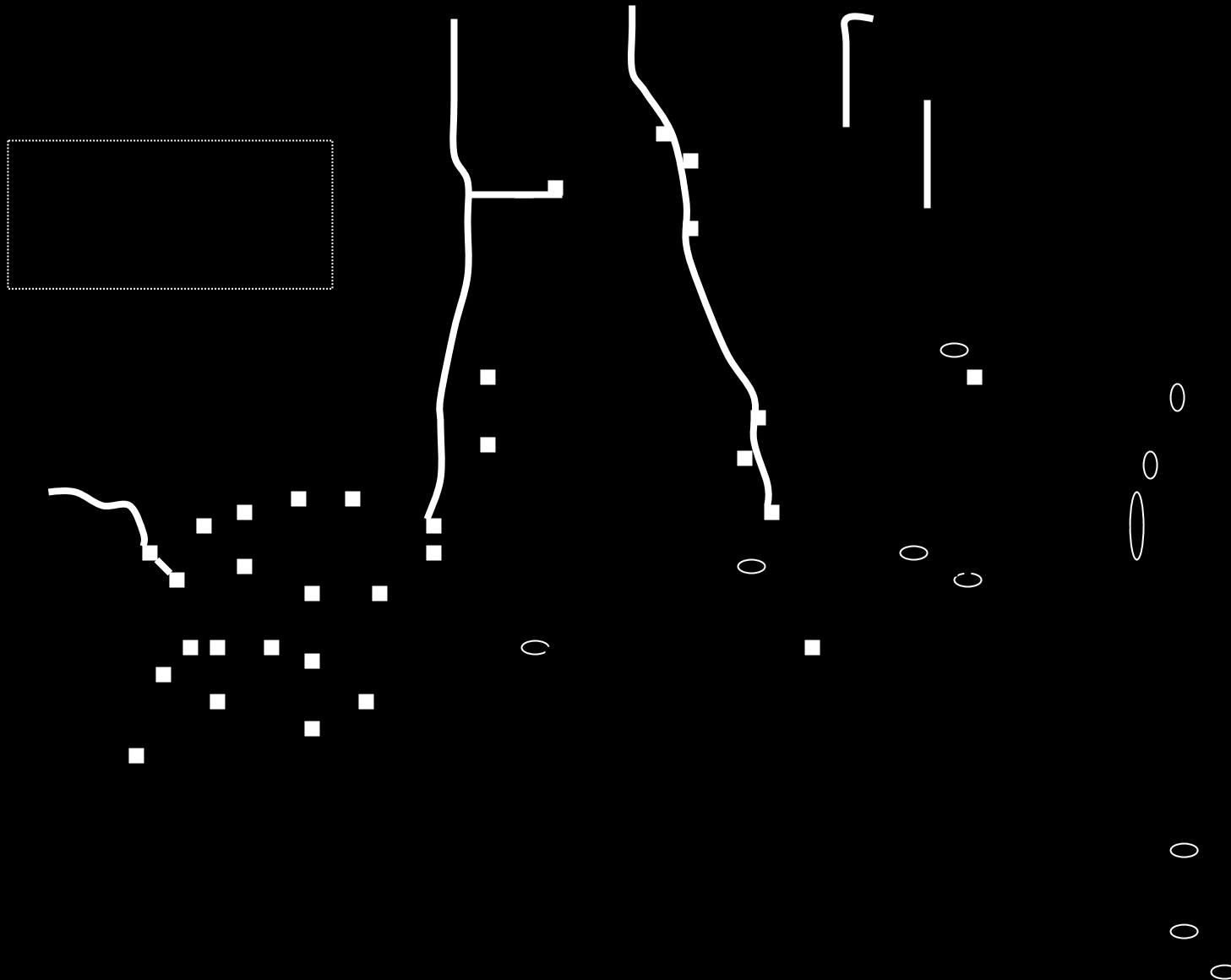
Slide 4-Three oil roads now access Huaorani Territory and two more reach the northern boundary of Yasuní National Park.

ZONE INTANGIBLE SLIDE SHOW – SLIDE # 5 of 8

Untapped
Oil Fields

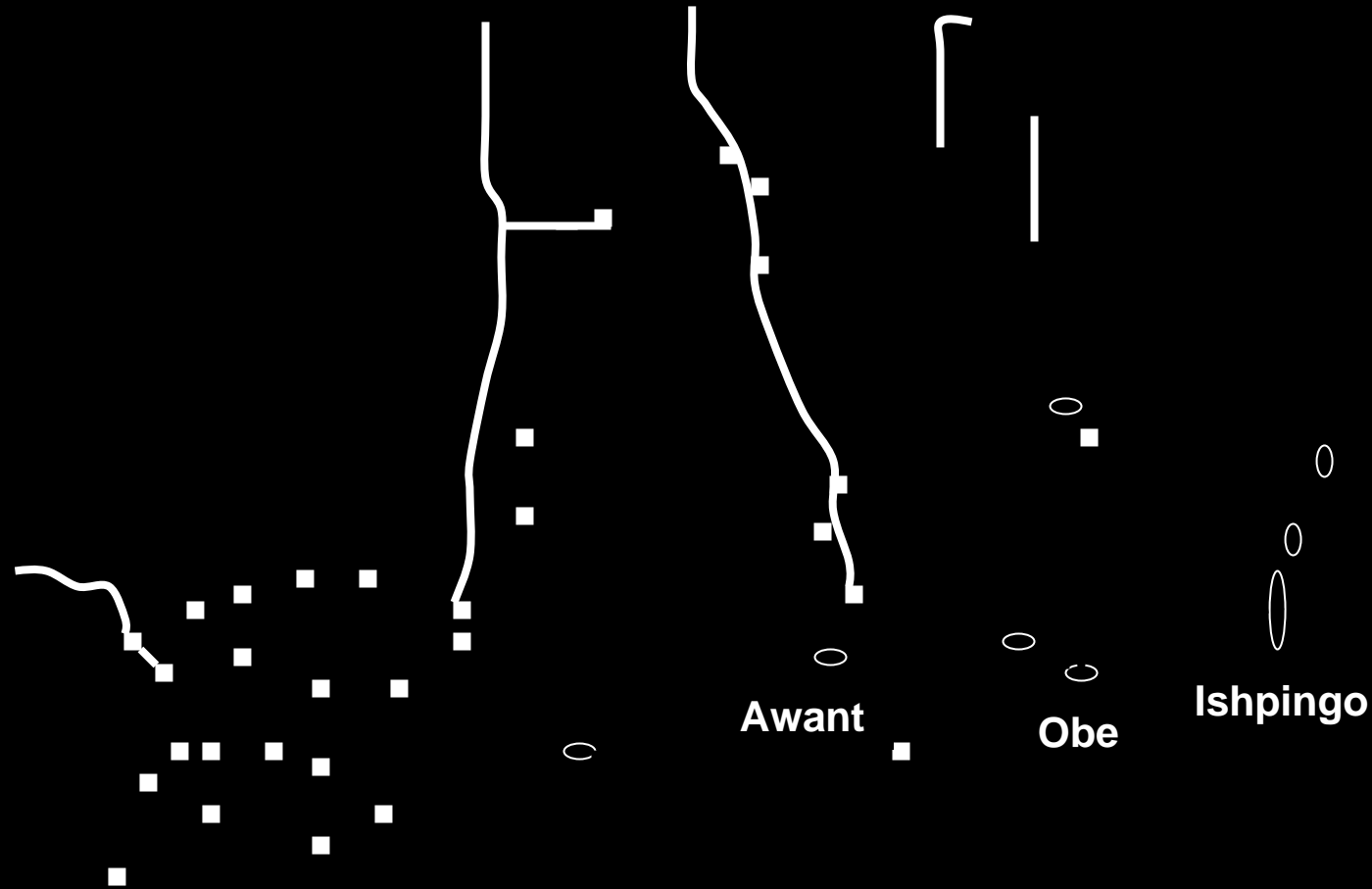


Slide 5-At least 11 untapped oil fields lie in the Yasuní region



Slide 6 - Boundary of the Zona Intangible

ZONE INTANGIBLE SLIDE SHOW – SLIDE # 7 of 8



Slide 7- One of the biggest achievements of the Decree was to include the Awant oil field within the boundaries of the Zona Intangible. Andes Petroleum, operator of Block 17, pressured the Ecuadorian Energy Ministry to change the limits of the Zone to allow extraction of Awant. Fortunately, President Palacio did not give in and kept Awant with the Zone's boundaries, hopefully permanently off-limits. Petrobras' Obe oil field was also included within the Zona Intangible, as was a large part of the massive Ishpingo field.

